



# CVS PHARMACY

## Zero Cash Flow Investment

---

1801 NJ-71

BELMAR, NJ 07719

MONMOUTH COUNTY

±13,050 SF CVS PHARMACY

**sand capital**

# sand capital

OFFERED EXCLUSIVELY BY

**JAY D. STEIN**

PRESIDENT

E: [jdstein@sandcapital.net](mailto:jdstein@sandcapital.net)

**ANDREW LAU**

DIRECTOR

E: [alau@sandcapital.net](mailto:alau@sandcapital.net)

**MATT STURCKEN**

SENIOR ACQUISITIONS MANAGER

E: [msturcken@sandcapital.net](mailto:msturcken@sandcapital.net)

**JUSTIN ELLER**

SENIOR PORTFOLIO MANAGER

E: [jeller@sandcapital.net](mailto:jeller@sandcapital.net)

## SAND CAPITAL

5725 N. Scottsdale Rd., Suite C-195

Scottsdale, AZ 85250

P: 480.949.9011

[sandcapital.net](http://sandcapital.net)

Sand Capital | Offering Memorandum | CVS Pharmacy

## CONFIDENTIAL DISCLAIMER

The information contained in this presentation has been prepared from data we believe to be reliable, but we make no representations as to its accuracy or completeness, and we do not undertake to update or correct any of the information presented. The presentation has been prepared solely as a preliminary document to discuss Sand Capital's history, experience, and initial thought processes with respect to a potential investment. Information you have been provided in this presentation contains "forward-looking statements." Forward-looking statements include all statements that do not relate solely to historical or current facts and can generally be identified by the use of words such as "may," "believe," "will," "expect," "project," "estimate," "intend," "anticipate," "plan," "continue," or similar expressions. Forward-looking statements inherently involve many risks and uncertainties that could cause actual results to differ materially from those projected in these statements. Factors that may cause actual results to differ materially from those discussed include, without limitation, changes to the proposed structure of the arrangements and transactions, market events, regulatory changes, and other factors. Past performance of any Zero Cash Flow investments is no guarantee of future results.



## PURCHASE PRICE

\$6,900,000

## CURRENT DEBT AMOUNT

\$4,235,447 (JANUARY 2025)

## ESTIMATED EQUITY REQUIREMENT

\$2,664,553

- LOAN TERMS 3.901% FIXED
- 22 YEAR FULLY AMORTIZING (ORIGINAL TERM)
- INCLUDES PAYDOWN READVANCE FEATURE

# INVESTMENT OVERVIEW

## HIGHLIGHTS

- **Triple-Net (NNN)** - Absolutely Zero Landlord Responsibilities. Tenant responsible for all maintenance and repair, including roof and structure.
- **Strong Credit Tenant** - CVS has investment-grade credit and strong financials. (CVS Health) S&P: BBB; NYSE: CVS
- **Long Term Lease** - 25-year original lease with 10 five-year extensions
- **New Build** - The portfolio was built in 2016 and 2017.
- **Zero Cash Flow Financing** - Assumable self-amortizing financing with below-market fixed 3.901% interest rate.
- **Debt Structure** - Requires limited equity investment and can generate passive losses that work to offset taxable income from other investments.
- **Paydown/Readvance** - Structure allows for low equity contributions with high long-term return on initial investment and allows withdrawal of money over and above percentage over the debt.





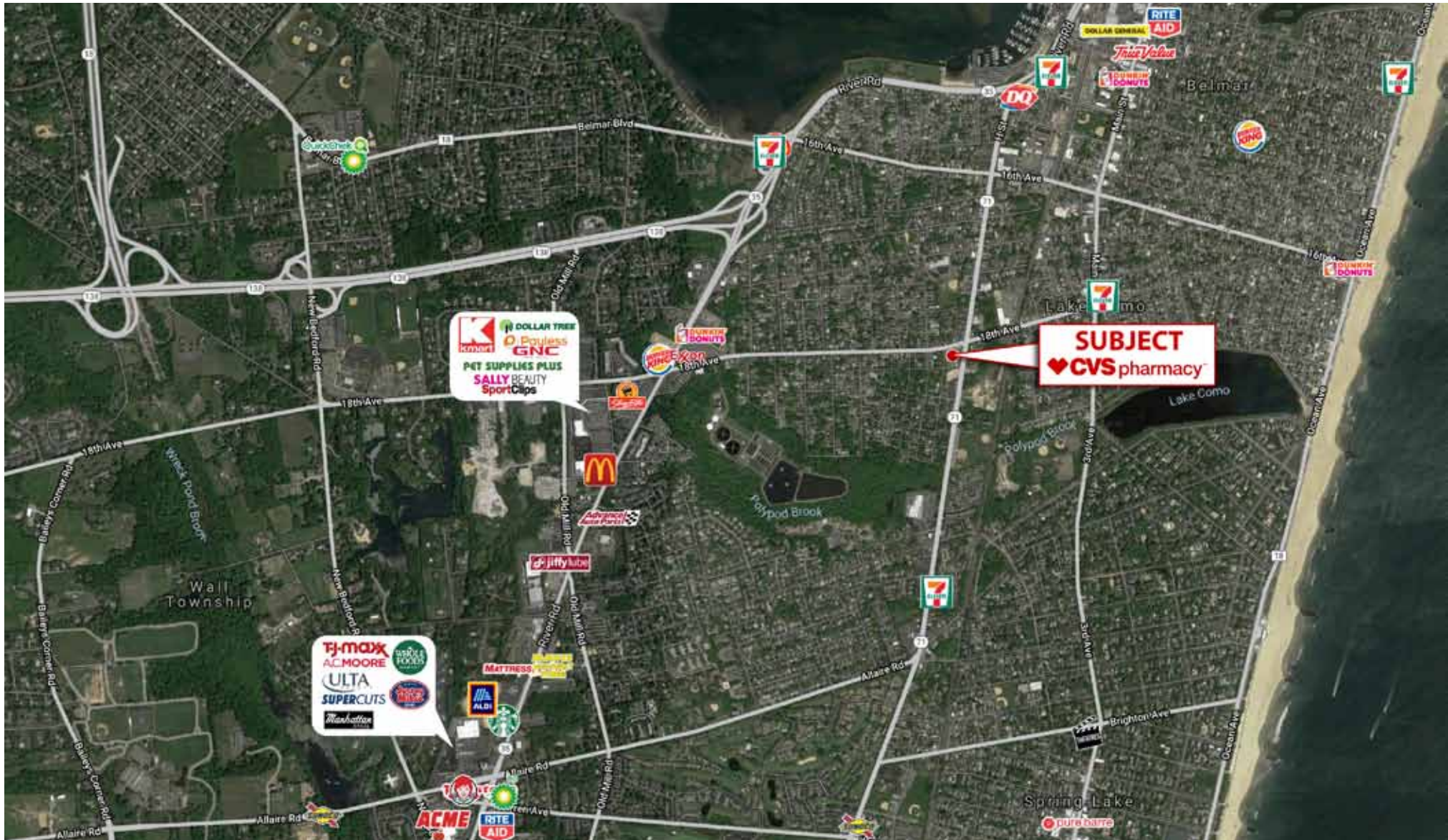
# LEASE ABSTRACT

<b>GUARANTOR</b>	CVS Health Corporation
<b>ADDRESS</b>	1801 NJ-71, Belmar, NJ 07719
<b>STORE NUMBER</b>	10091
<b>LAND OWNERSHIP</b>	Fee
<b>PROPERTY TYPE</b>	Free-Standing Retail
<b>LAND</b>	1.47 Acres
<b>BUILDING SIZE</b>	± 13,050 SF
<b>YEAR BUILT</b>	2016
<b>ANNUAL RENT</b>	\$376,523
<b>LEASE COMMENCEMENT</b>	September 27, 2017
<b>LEASE EXPIRATION</b>	January 31, 2043

<b>LEASE TERM REMAINING</b>	Approximately 18 years
<b>PRIMARY LEASE TERM</b>	25 years
<b>OPTIONS</b>	10 five-year: 2 fixed rate at 90% current rent 8 variable rate at fair market value
<b>INCREASES</b>	None
<b>LANDLORD RESPONSIBILITIES</b>	None
<b>UTILITIES</b>	Tenant Responsibility
<b>REPAIR AND/OR MAINTENANCE OF ROOF, STRUCTURE &amp; PARKING LOT</b>	Tenant Responsibility
<b>TAXES</b>	Tenant Responsibility
<b>INSURANCE</b>	Tenant Responsibility



# LOCATION





# MARKET & DEMOGRAPHICS

## BELMAR, NJ

1 MILE      3 MILES      5 MILES

### POPULATION

	1 MILE	3 MILES	5 MILES
2024	13,836	58,596	122,588
2029	13,710	58,410	122,577

### HOUSEHOLDS

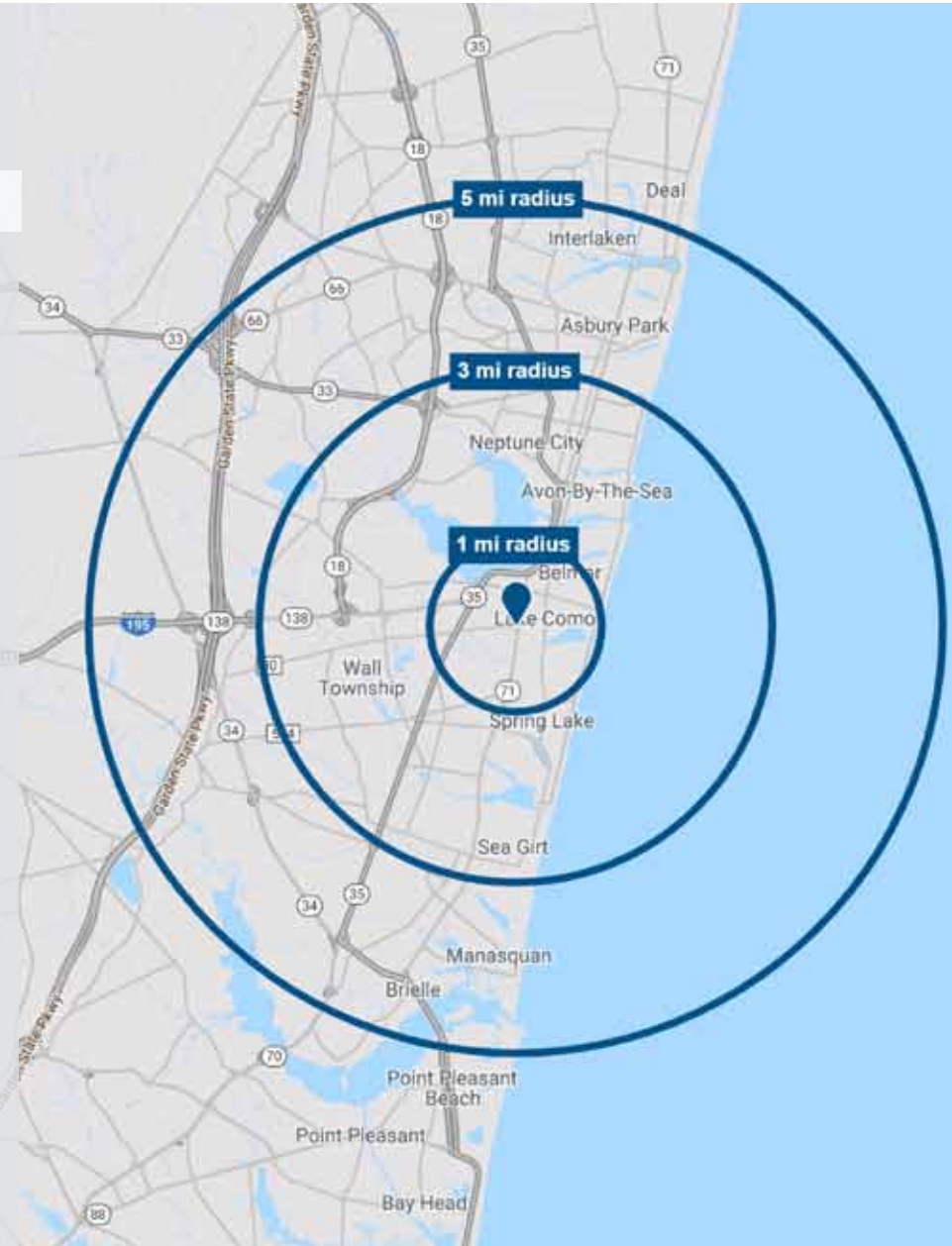
	1 MILE	3 MILES	5 MILES
2024	6,229	26,002	53,503
2029	6,152	25,834	53,413

### AVERAGE HOUSEHOLD INCOME

	1 MILE	3 MILES	5 MILES
2024	\$154,707	\$150,930	\$151,929
2029	\$165,321	\$160,502	\$161,063

### DAYTIME POPULATION

	1 MILE	3 MILES	5 MILES
2024	8,150	39,512	93,732





CVS HEALTH CORPORATION	
NUMBER OF LOCATIONS	9,395
CREDIT RATING	BBB/Stable (S&P)
STOCK SYMBOL	NYSE: CVS
TOTAL REVENUE	\$357.78 Billion
MARKET CAP	\$101.61 Billion
TENANT BUSINESS	Retail/Pharmacy
HEADQUARTERS	Woonsocket, RI
WEBSITE	cvshealth.com

## CVS HEALTH

**CVS Health Corporation** (NYSE: CVS) operates retail pharmacy and pharmacy benefit management businesses in the United States. The company offers prescription drugs, general merchandise, including over-the-counter drugs, beauty products and cosmetics, seasonal merchandise, greeting cards, convenience foods, and film and photofinishing services.

It sells its products through CVS or CVS Pharmacy retail stores, as well as through online retail website CVS.com. The company also offers pharmacy benefit management services, including mail order pharmacy, specialty pharmacy, plan, design, and administration, formulary management, and claims processing services. As of December 31, 2023, it operated 9,395 retail drugstores and 1,204 health care clinics. The company was formerly known as CVS Caremark Corporation and changed its name to CVS Health Corporation in September 2014. CVS Health Corporation was founded in 1892 and is headquartered in Woonsocket, Rhode Island. On December 31, 2023, CVS Health Corporation reported total revenue of \$357.78 billion, net income of \$8.34 billion, and a market cap of \$101.61 billion. CVS currently holds a Standard & Poor's credit rating of BBB/Stable.

# TENANT OVERVIEW



# LOAN ABSTRACT

ORIGINAL LOAN BALANCE	\$5,554,635
CURRENT LOAN BALANCE	\$4,235,447 as of January 2025
INTEREST RATE	Fixed at 3.901%
MATURITY	October 10, 2039
ORIGINAL LOAN AMORTIZATION	22 year
ORIGINAL LOAN TERM	22 years
COLLATERAL	Non-recourse subject to typical carve-outs
ASSUMPTION FEE	Dependent upon purchase structure
PREPAYMENT	Defeasance
PRICE	\$6,900,000
ESTIMATED EQUITY REQUIREMENT	\$2,664,553

## PAYDOWN/READVANCE

### Paydown/Readvance Example (All Equity Trade)

- Sale Proceeds to place in 1031 - \$6,900,000
- Purchase Belmar, Wall Township CVS - \$6,900,000
- Equity Requirement - \$2,664,553
- Loan Balance - \$4,235,447
- Buyer PDRA Costs/Fees - \$205,183
- **Equity Pulled out of Exchange Tax-Free - \$4,030,264**

**Buyer has completed exchange, owns a brand-new CVS which is rapidly building equity, and pulled out over \$4MM in equity TAX-FREE!**



# PURCHASING A ZERO

ZERO CASH FLOW  
PURCHASE VS. CASH PURCHASES



[CLICK HERE TO VIEW ZERO CASH FLOW INVESTMENTS](#)

EXCEPTIONAL OPPORTUNITY TO ACQUIRE BRAND NEW CVS ZERO CASH FLOW  
PROPERTIES FROM THE MOST RECENT CVS SALE-LEASEBACK PORTFOLIO

OFFERED EXCLUSIVELY BY

**JAY D. STEIN**

PRESIDENT

E: [jdstein@sandcapital.net](mailto:jdstein@sandcapital.net)

**ANDREW LAU**

DIRECTOR

E: [alau@sandcapital.net](mailto:alau@sandcapital.net)

**MATT STURCKEN**

SENIOR ACQUISITIONS MANAGER

E: [msturcken@sandcapital.net](mailto:msturcken@sandcapital.net)

**JUSTIN ELLER**

SENIOR PORTFOLIO MANAGER

E: [jeller@sandcapital.net](mailto:jeller@sandcapital.net)

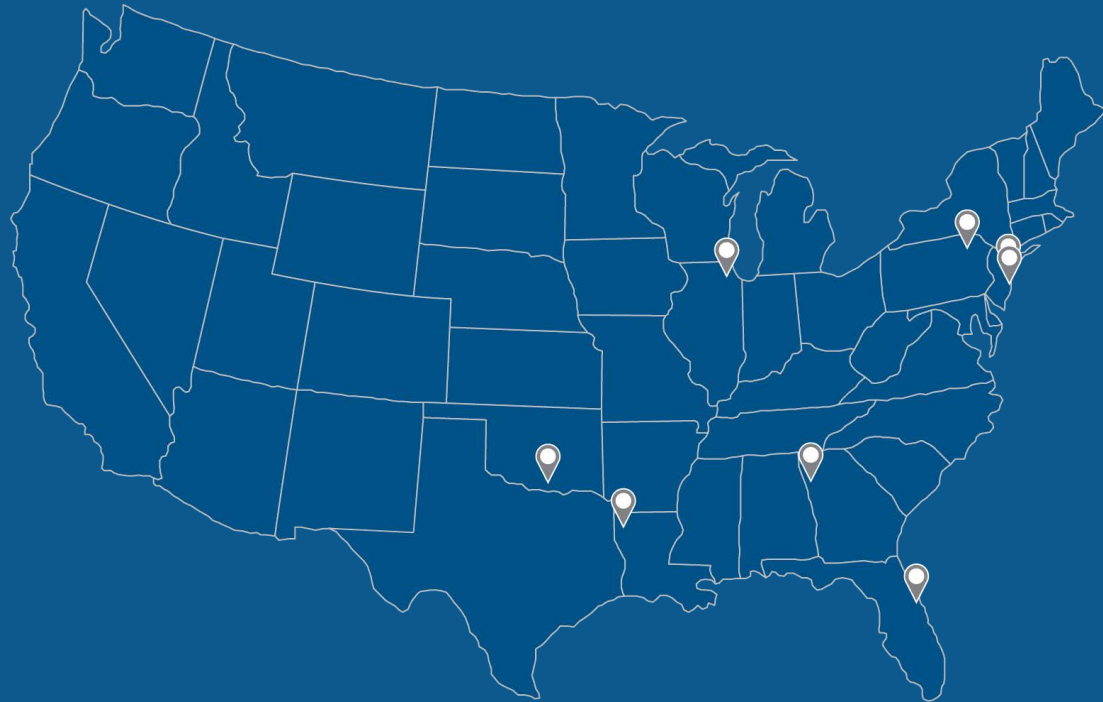
**SAND CAPITAL**

5725 N. Scottsdale Rd., Suite C-195

Scottsdale, AZ 85250

P: 480.949.9011

[sandcapital.net](http://sandcapital.net)



CVS ZERO CASH FLOW PROPERTIES LOCATIONS

**sand capital**